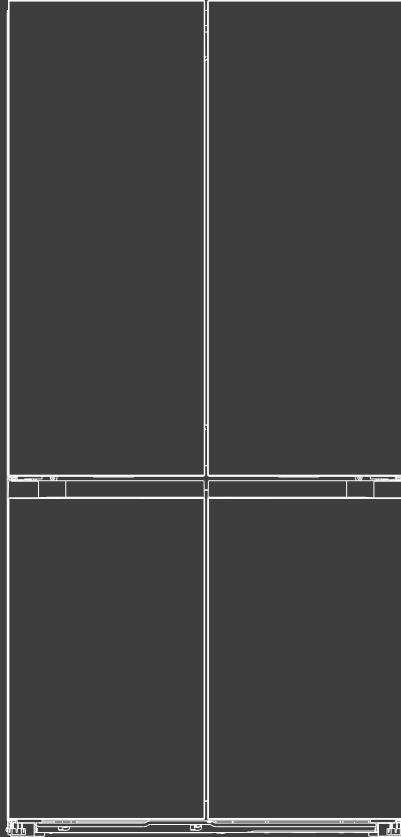


REFRIGERATOR

COWAY

**MULTI-DOOR
551L**

CR551-MDR01



USER MANUAL ►

This instruction manual contains important information and recommendations that we would advise you to comply with to obtain the best results from the Multi-Door Refrigerator.

CONTENTS

SAFETY INFORMATION	1-5
OVERVIEW	6
INSTALLATION	7-13
DAILY USE	14-23
NOTE	24

In the interest of your safety and to ensure the correct use, before installing and first using the appliance, read this user manual carefully, including its hints and warnings. To avoid unnecessary mistakes and accidents, it is important to ensure that all people using the appliance are thoroughly familiar with its operation and safety features. Save these instructions and make sure that they remain with the appliance if it is moved or sold, so that everyone using it through its life will be properly informed on appliance use and safety.

For the safety of life and property keep the precautions of these user's instructions as the manufacturer is not responsible for damages caused by omission.

CHILDREN AND VULNERABLE PEOPLE SAFETY

- This appliance is not intended for use by persons (including children) with reduced physical, sensory or mental capabilities, or lack of experience and knowledge, unless they have been given supervision or instruction concerning use of the appliance by a person responsible for their safety.
- Children should be supervised to ensure that they do not play with the appliance.
- Cleaning and user maintenance shall not be made by children unless they are supervised.
- Keep all packaging well away from children. There is risk of suffocation.
- If you are discarding the appliance pull the plug out of the socket, cut the connection cable (as close to the appliance as you can) and remove the door to prevent playing children to suffer electric shock or to close themselves into it.
- If this appliance featuring magnetic door seals is to replace an older appliance having a spring lock (latch) on the door or lid, be sure to make that spring lock unusable before you discard the old appliance. This will prevent it from becoming a death trap for a child.

GENERAL SAFETY

- ⚠ **WARNING!** Keep ventilation openings, in the appliance enclosure or in the built-in structure, clear of obstruction.
 - ⚠ **WARNING!** Do not use mechanical devices or other means to accelerate the defrosting process, other than those recommended by the manufacturer.
 - ⚠ **WARNING!** Do not damage the refrigerant circuit.
 - ⚠ **WARNING!** Do not use other electrical appliances (such as ice cream makers) inside of refrigerating appliances, unless they are approved for this purpose by the manufacture.
 - ⚠ **WARNING!** Do not touch the light bulb if it has been on for a long period of time because it could be very hot. ¹⁾
-
- Do not store explosive substances such as aerosol cans with a flammable propellant in this appliance.
 - The refrigerant isobutane (R600a) is contained within the refrigerant circuit of the appliance, a natural gas with a high level of environmental compatibility, which is nevertheless flammable.
 - During transportation and installation of the appliance, be certain that none of the components of the refrigerant circuit become damaged.
 - Avoid open flames and sources of ignition.
 - Thoroughly ventilate the room in which the appliance is situated.
 - It is dangerous to alter the specifications or modify this product in any way. Any damage to the cord may cause a short circuit, fire and/or electric shock.
 - This appliance is intended to be used in household and similar applications such as
 - Staff kitchen areas in shops, offices and other working environments.
 - Farm houses and by clients in hotels, motels and other residential type environments.
 - Bed and breakfast type environments.
 - Catering and similar non-retail applications.
-
- ⚠ **WARNING!** Any electrical components (plug, power cord, compressor, light bulb and etc.) must be replaced by a certified service agent or qualified service personnel.

1) If there is a light in the compartment.

- Power cord must not be lengthened.
- Make sure that the power plug is not squashed or damaged by the back of the appliance. A squashed or damaged power plug may overheat and cause a fire.
- Make sure that you can come to the mains plug of the appliance.
- Do not pull the mains cable.
- If the power plug socket is loose, do not insert the power plug. There is a risk of electric shock or fire.
- This appliance is heavy. Care should be taken when moving it.
- Do not remove nor touch items from the freezer compartment if your hands are damp-wet, as this could cause skin abrasions or frost-freezer burns.
- Avoid prolonged exposure of the appliance to direct sunlight.

DAILY USE

- Do not put heat on the plastic parts in the appliance.
- Do not place food products directly against the rear inner wall.
- Frozen food must not be re-frozen once it has been thawed out.¹⁾
- Store pre-packed frozen food in accordance with the frozen food manufacturer's instructions.¹⁾
- Appliance's manufacturer's storage recommendations should be strictly adhered to. Refer to relevant instructions.
- Do not place carbonated or fizzy drinks in the freezer compartment as it creates pressure on the container, which may cause it to explode, resulting in damage to the appliance.¹⁾
- Ice lollies can cause frost burns if consumed straight from the appliance.¹⁾

CARE AND CLEANING

- Before maintenance, switch off the appliance and disconnect the mains plug from the mains socket.
- Do not clean the appliance with metal objects.
- Do not use sharp objects to remove frost from the appliance. Use a plastic scraper.¹⁾
- Regularly examine the drain in the refrigerator for defrosted water. If necessary, clean the drain. If the drain is blocked, water will collect in the bottom of the appliance.²⁾

1) If there is a freezer compartment.

2) If there is a fresh & food storage compartment.

INSTALLATION

Important! For electrical connection carefully follow the instructions given in specific paragraphs.

- Unpack the appliance and check if there are damages on it. Do not connect the appliance if it is damaged. Report possible damages immediately to the place you bought it. In that case retain packing.
- It is advisable to wait at least six before connecting the appliance to allow the oil to flow back in the compressor.
- Adequate air circulation should be around the appliance, lacking this leads to overheating. To achieve sufficient ventilation follow the instructions relevant to installation.
- Wherever possible the spacers of the product should be against a wall to avoid touching or catching warm parts (compressor, condenser) to prevent possible burn.
- The appliance must not be located close to radiators or cookers.
- Make sure that the mains plug is accessible after the installation of the appliance.


SERVICE

- Any electrical work required to do the servicing of the appliance should be carried out by a qualified electrician or competent person.
- This product must be serviced by an authorized Service Center, and only genuine spare parts must be used.

ENERGY SAVING

- Don't put hot food in the appliance;
- Don't pack food close together as this prevents air circulating;
- Make sure food don't touch the back of the compartment(s);
- If electricity goes off, don't open the door(s);
- Don't open the door(s) frequently;
- Don't keep the door(s) open for too long time;
- Don't set the thermostat on exceeding cold temperatures;
- Some accessories, such as drawers, can be removed to get larger storage volume and lower energy consumption.

ENVIRONMENT PROTECTION

 This appliance does not contain gasses which could damage the ozone layer, in either its refrigerant circuit or insulation materials. The appliance shall not be discarded together with the urban refuse and rubbish. The insulation foam contains flammable gases: the appliance shall be disposed according to the appliance regulations to obtain from your local authorities. Avoid damaging the cooling unit, especially the heat exchanger. The materials used on this appliance marked by the symbol ♻ are recyclable.



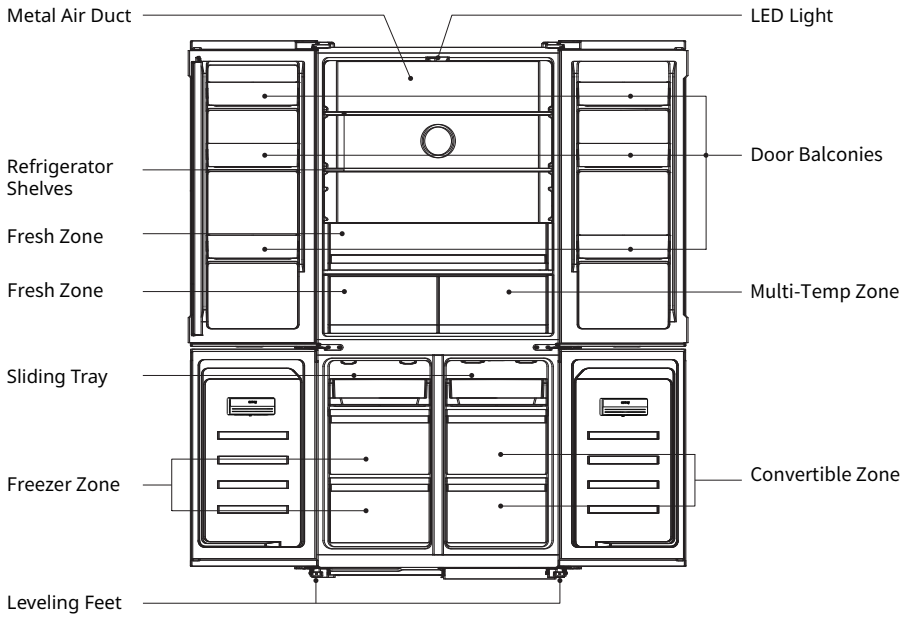
The symbol on the product or on its packaging indicates that this product may not be treated as household waste. Instead it should be taken to the appropriate collection point for the recycling of electrical and electronic equipment. By ensuring this product is disposed of correctly, you will help prevent potential negative consequences for the environment and human health, which could otherwise be caused by inappropriate waste handling of this product. For more detailed information about recycling of this product, please contact your local council, your household waste disposal service or the shop where you purchased the product.

Packaging Materials

The materials with the symbol are recyclable. Dispose the packaging in a suitable collection containers to recycle it.

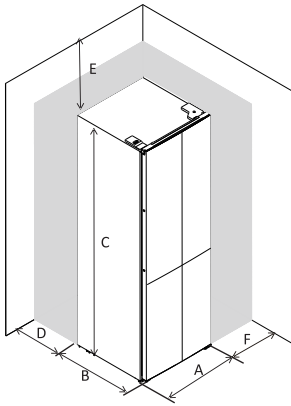
Disposal of The Appliance

1. Disconnect the mains plug from the mains socket.
2. Cut off the mains cable and discard it.



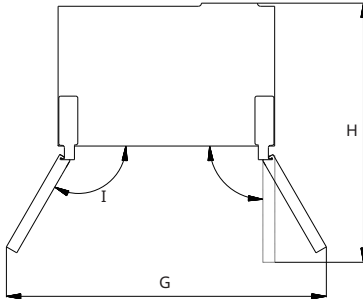
This image is only for illustration purposes, for details please check your appliance.

SPACE REQUIREMENT



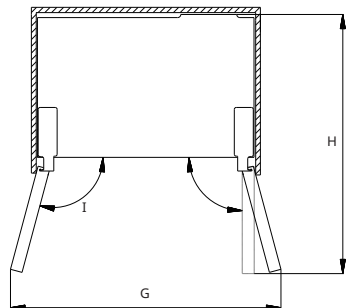
1. Keep enough space of door open.
2. Freestanding installation and slot-in installation have different maximum door open angle.

Freestanding Installation



A	905
B	597
C	1902
D	3
E	6
F	6
G	1335
H	1020
I	120°

Slot-In Installation



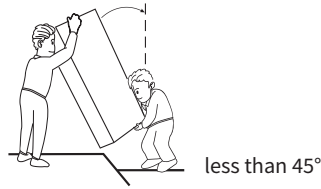
A	905
B	597
C	1902
D	3
E	6
F	6
G	1128
H	1020
I	105°

MOVING THE REFRIGERATOR

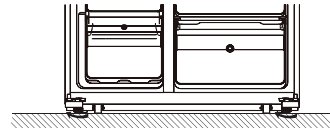
- Unplug the power plug and cut off the power.
- Remove all food from the refrigerator.
- Use tape to fix moving parts such as refrigerator shelves, fruit and vegetable boxes and drawers.
- Close the refrigerator door tightly and secure it with tape to prevent it from being opened when moving.
- When handling, the maximum inclination angle should not exceed 45°, so as to avoid the failure of the refrigeration system.
- In order to avoid scratching the floor, the feet of the refrigerator should be wrapped in advance, and it is forbidden to forcibly move the refrigerator.
- Do not hold the refrigerator door, top cover and various pipes when moving.



Do not put the refrigerator upside down.



LEVELING THE REFRIGERATOR



- Clockwise rotate feet to heighten them by hand.
- Anticlockwise rotate feet to lower them by hand.

POSITIONING

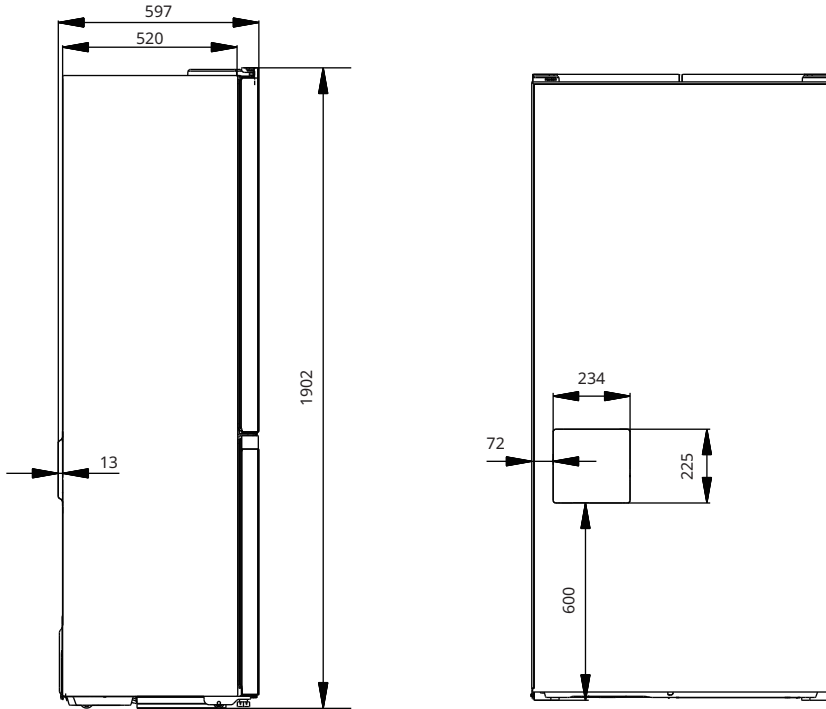
Install this appliance at a location where the ambient temperature corresponds to the climate class indicated on the rating plate of the appliance:

For refrigerating appliances with climate class:

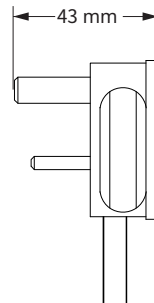
- Extended temperate: this refrigerating appliance is intended to be used at ambient temperatures ranging from 10°C to 32°C; (SN)
- Temperate: this refrigerating appliance is intended to be used at ambient temperatures ranging from 16°C to 32°C; (N)
- Subtropical: this refrigerating appliance is intended to be used at ambient temperatures ranging from 16°C to 38°C; (ST)
- Tropical: this refrigerating appliance is intended to be used at ambient temperatures ranging from 16°C to 43°C; (T)

HINTS ABOUT POSITIONAL INTERFERENCE

1. The PCB cover was designed to ensure correct distance between refrigerator backboard and wall, the closest position between refrigerator and wall is when PCB cover touch wall.
2. The position and dimension of PCB cover as below shows, please consider the position of electrical socket to avoid positional interference with the PCB cover.

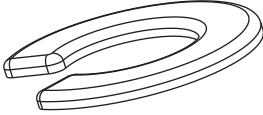


3. The dimension of plug as below shows, please consider the thickness of socket and electrical socket if the electrical socket located at the back of refrigerator.

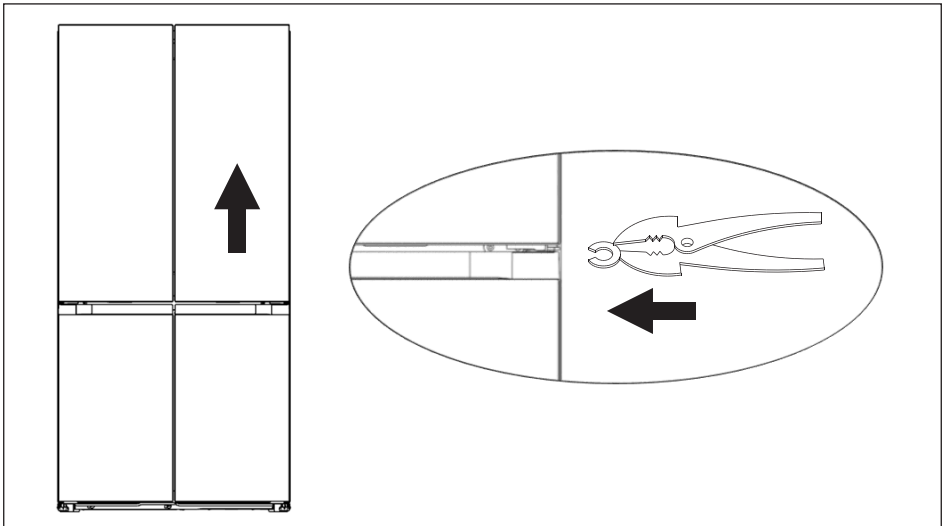


LEVEL DOORS

After transportation or door balconies are loaded by food or beverage, upper two doors may not be aligned. There are 3 C type washers which are used to adjust doors. Please follow below process to level doors.



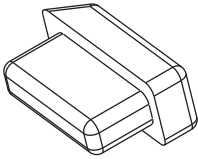
1. Before check alignment of doors, please make sure appliance stand levelly .
2. If top of upper two doors looks not in a line, please slightly lift lower door and insert a pieces of C type washer by a clip between bottom of door and middle hinge.



⚠ WARNING! Please be careful to avoid fingers are clipped by door. Please use tool.

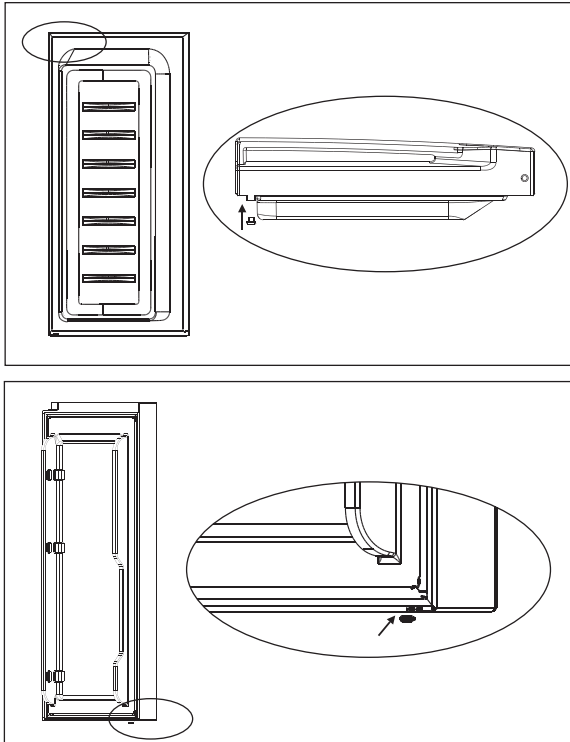
⚠ WARNING! Please keep C type washers far away children to avoid them are swallowed by children. They are small parts.

RUBBER BLOCKS



There is one rubber block on each door. They function as spring to relieve impact when door closes

Please not pull the rubber blocks. If they absent from the doors, please take one from accessory bag and insert it to the hole of door.

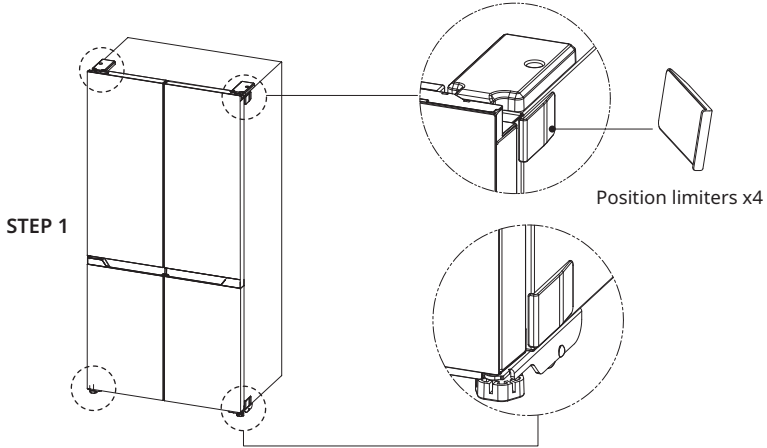


⚠ WARNING! Please keep rubber blocks far away children to avoid them are swallowed by children. They are small parts.

1. Install limiters

During daily use, the refrigerator may have slightly move. To ensure the refrigerator keep in correct position with cupboard, you could use the position limiter before place the refrigerator into cupboard.

- 1) Take out 4 position limiters from accessory bag;
- 2) Wipe off the dust on the corners of the refrigerator;
- 3) Remove the double-sided tape on the limiter, align it with the corners of the refrigerator, and stick it.

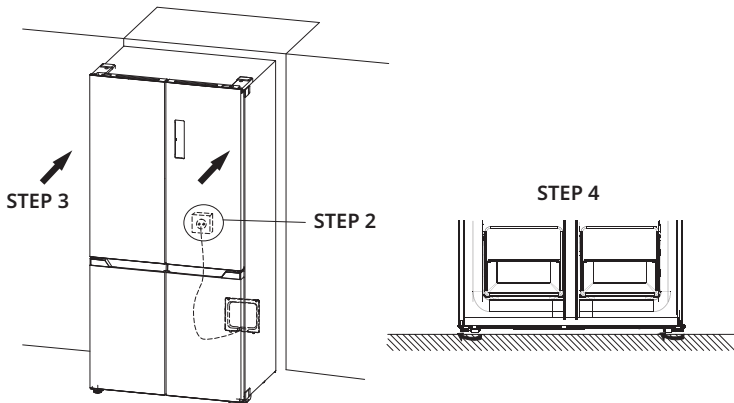


2. Plug the refrigerator

3. Push the refrigerator to the reserved position

There are 4 wheels and 2 adjustable feet under the refrigerator. To prevent potential damage with floor, please heighten the adjustable feet before pushing.

4. Adjust the adjustable feet lower to stable the refrigerator.



Positioning

Install this appliance at a location where the ambient temperature corresponds to the climate class indicated on the rating plate of the appliance:


For refrigerating appliances with climate class:

- Extended temperate: This refrigerating appliance is intended to be used at ambient temperatures ranging from 10°C to 32°C; (SN)
- Temperate: This refrigerating appliance is intended to be used at ambient temperatures ranging from 16°C to 32°C;(N)
- Subtropical: This refrigerating appliance is intended to be used at ambient temperatures ranging from 16°C to 38°C;(ST)
- Tropical: This refrigerating appliance is intended to be used at ambient temperatures ranging from 16°C to 43°C;(T)

Location

The appliance should be installed well away from sources of heat such as radiators, boilers, direct sunlight etc. Ensure that air can circulate freely around the back of the cabinet. To ensure best performance, if the appliance is positioned below an overhanging wall unit, the minimum distance between the top of the cabinet and the wall unit must be at least 6mm. Ideally, however, the appliance should not be positioned below overhanging wall units. Accurate leveling is ensured by one or more adjustable feet at the base of the cabinet.

This refrigerating appliance is not intended to be used as a built-in appliance;

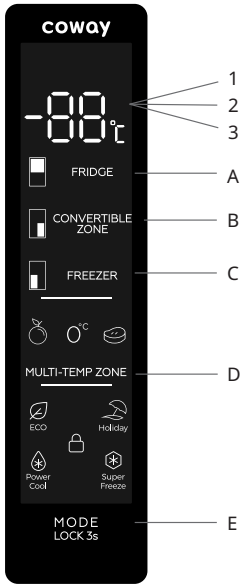
 **WARNING!** It must be possible to disconnect the appliance from the mains power supply; the plug must therefore be easily accessible after installation.

Electrical Connection

Before plugging in, ensure that the voltage and frequency shown on the rating plate correspond to your domestic power supply. The appliance must be earthed. The power supply cable plug is provided with a contact for this purpose. If the domestic power supply socket is not earthed connect the appliance to a separate earth in compliance with current regulations consulting a qualified electrician.

The manufacturer declines all responsibility if the above safety precautions are not observed. This appliance complies with the E.E.C. directives.

USING THE CONTROL PANEL



1.1 KEY OPERATION

- A. Fridge Temp. Setting
- B. Convertible Zone Temp. Setting
- C. Freezer Temp. Setting
- D. Multi-Temp Setting Fresh Fruit, 0°C Fresh, Soft Freeze
- E. Locking / Unlocking / Mode Setting

1.2 LED DISPLAY

- 1. Temperature of Fridge Compartment
- 2. Temperature of Freezer Compartment
- 3. Temperature of Convertible Compartment

2.0 OPERATING CONDITION

- a. The control panel is 100% lit up for 3 seconds, which operates exactly as per the setting (mode and temperature) before the power off. The system will be automatically locked 25 seconds after the last key operation. After locking, the light of the panel would be out 120 seconds after the last key operation.
- b. The Fridge / Freezer / Convertible Zone temperature will be showed separately by setting each zone temperature.

2.1 DISPLAY

- 2.1.1 The panel will be lit up for 2 minutes once the door of fridge compartment or freezer compartment is opened. (One door signal is sensed at a time).
- 2.1.2 The panel will be lit up by any key operation whereas the light would be out 2 minutes after the last operation.
- 2.1.3 Display during normal operation
 - Temperature Display of the Fridge Compartment: Indicating the temperature of the current setting.
 - Temperature Display of the Freezer Compartment: Indicating the temperature of the current setting.
 - Temperature Display of the Convertible Compartment: Indicating the temperature of the current setting.

3.0 ILLUSTRATION OF THE KEY

3.1 Temperature Control of the Fridge Zone

- a. Temperature Control of the Fridge Zone:
After entering the temperature control of the fridge compartment, this key flashes. By touching the key consecutively, the temperature would change in a circle of "2°C, 3°C, 4°C, 5°C, 6°C, 7°C, 8°C, --(off)", after which 5-second flashing means the selection of temperature is confirmed.
- b. Shut off of the Fridge Zone:
Press the key of "Temperature Control of Fridge Zone", choose "--", a 5-second flashing means the selection of temperature is made, namely the fridge compartment would stop refrigeration.

3.2 Temperature Control of the Freezer Zone

Temperature Control of the Freezer Zone: After entering the temperature control of the freezer compartment, the key flashes. By touching the key consecutively, the temperature would change in a circle of "-14°C, -15°C, -16°C, -17°C, -18°C, -19°C, -20°C, -21°C, -22°C", after which a 5-second flashing means the selection of temperature is confirmed.

3.3 Temperature Control of the Convertible Zone

- a. Temperature Control of the Convertible Zone:
After entering the temperature control of the Convertible compartment, this key flashes. By touching the key consecutively, the temperature would change in a circle of "5°C, 4°C, 3°C, 2°C, 1°C, 0°C, -1°C, -2°C, -3°C, -4°C, -5°C, -6°C, -7°C, -8°C, -9°C, -10°C, -11°C, -12°C, -13°C, -14°C, -15°C, -16 °C, -17°C, -18°C, -19°C, -20°C, --(off)", after which 5-second flashing means the selection of temperature is confirmed.
- b. Shut off the Convertible Zone:
Press the key of "Temperature Control of Convertible Zone", choose "--", a 5-second flashing means the selection of temperature is made, namely the convertible compartment would stop refrigeration.

3.4 Temperature Control of the Multi-Temp Zone

By touching the key consecutively, the logo would light in a circle of "fresh fruit, 0°C fresh, soft freeze", and the corresponding temperature is: fresh fruit: 3°C 0°C fresh: 0°C soft freeze: -1.5°C

3.5 Mode / Locking / Unlocking

- a. By touching this key consecutively, the operation mode of the refrigerator will change in a circle of ECO Mode-Holiday Mode-Super Cool Mode-Super Freezing Mode. A 5-second flashing means the selection of temperature is confirmed.
- b. Long Press to Enter / Exit Locking Mode
 - Unlocking: Press for 3 seconds in the mode of locking, all the keys would be unlocked after the a beep.
 - Locking: Press for 3 seconds in the mode of unlocking, all the keys would be locked after the a beep.

3.6 Press Button

Short beep after per press button
All buttons will only valid under unlock mode.

3.7 Lock Function

No operation in 25 sec will lock the display automatically.

3.8 ECO Mode

Press mode to choose ECO Mode, ECO icon keeps bright after 5 sec flashing.
Temperature fix 6°C in fridge compartment and -16°C in freezer compartment under ECO Mode, “Freezer” & “Fridge” button in vain while ECO icon will flash three times in alarm.
The temperature of convertible compartment can be adjusted freely by operating the convertible zone Temp. Setting.

Exit ECO Mode:

Choose mode, exit ECO Mode after 5 sec, entering the selected mode.

3.9 Holiday Mode

Press mode to choose Holiday Mode, the icon keeps bright after 5 sec flashing, entering holiday mode.

Temperature fix 17°C in fridge compartment, “fridge” button in vain, while Holiday icon will flash three times in alarm.

Temperature of freezer compartment and convertible compartment can be adjusted freely.

Exit Holiday Mode:

Choose mode, exit Holiday Mode after 5 sec, entering the selected mode.

4.0 Super Freezing mode

Choose mode, the icon keeps bright after 5 sec flashing, entering Freezing Mode. Freezing mode: Temperature fix -25°C in freezing compartment, “freezer” button in vain, while freezing icon will flash three times in alarm.

Temperature of fridge compartment and convertible compartment can be adjusted freely.

Exit Freezing Mode: meeting below conditions.

-Manually exit Freezing Mode.

-Freezing period more than 50 hours

Mode remains the same before entering super freezing mode.

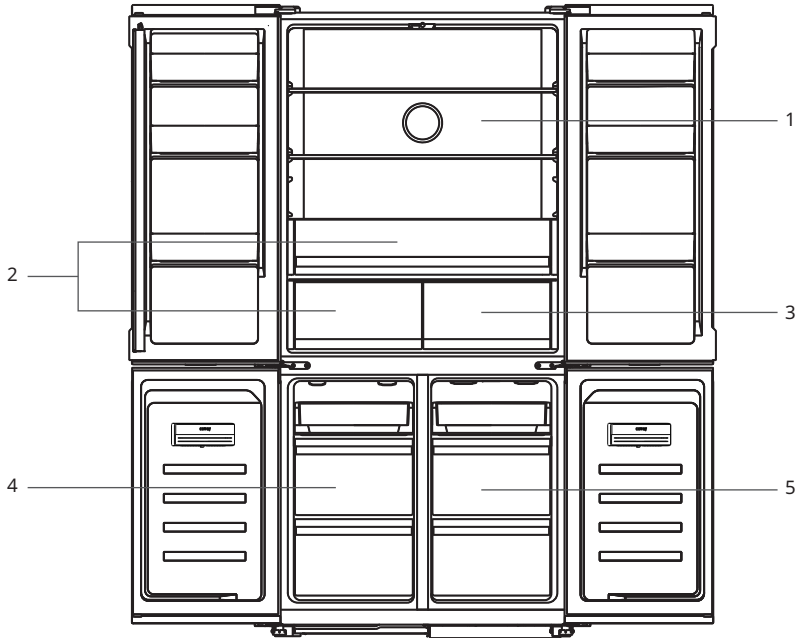
4.1 Power Cool

Cools the fridge compartment to the lowest temperature as designed. After approx. 2.5 hours, the temperature setting would be restored to the previous user setting mode.

4.2 Door Open Alarm

If fridge or freezer door keeps open for 60 seconds, periodical alarm will be arisen and repeat this cycle until the door is closed.

MULTI-TEMPERATURE ZONE



1. Fridge temp. 2°C ~ 8°C / Off Controlled by operating display panel
2. Fresh temp. 2°C ~ 8°C
3. Multi-Temp Zone. -1.5°C / 0°C / 3°C
4. Freezer temp. -22°C ~ -14°C Controlled by operating display panel
5. Convertible Zone -20°C ~ 5°C / Off Controlled by operating display panel

FIRST USE

Cleaning the interior

Before using the appliance for the first time, wash the interior and all internal accessories with lukewarm water and some neutral soap so as to remove the typical smell of a brand new product, then dry thoroughly.

Important! Do not use detergents or abrasive powders, as these will damage the finish.

DAILY USE

Position different food in different compartments according to be below table.

Refrigerator compartments	Type of food
Door or balconies of fridge compartment	<ul style="list-style-type: none"> • Food with natural preservatives, such as jams, juices, drinks, condiments. • Do not store perishable food.
Large Fresh Zone	<ul style="list-style-type: none"> • Fruits, herbs and vegetables should be placed separately in the crisper bin. • Do not store bananas, onions, potatoes, garlic in the refrigerator.
Fridge shelf	<ul style="list-style-type: none"> • Dairy food, eggs, cakes, pasta, pizza • Food that do not need cooking, such as ready-to-eat food, deli meats, leftovers.
Fresh Zone	<ul style="list-style-type: none"> • Locking humidity and fresh. Prolong preservation time • Fresh fruit and vegetables.
Multi-Temp Zone	<ul style="list-style-type: none"> • Fresh fruit: 3°C, Fresh fruits and vegetables. • 0°C fresh: 0°C, drinks and beverages. • Soft freeze: -1.5°C, chilling food for short-term storage and defrosting, such as raw meat, fish, seafood, dumplings.
Convertible Zone	<ul style="list-style-type: none"> • -20°C ~ 5°C, wide range variable temperature. • 3°C ~ 5°C: fresh fruit, vegetables. • 0°C ~ 2°C: drinks, beverages. • -7°C ~ -1°C: chilling food for short-term storage, such as raw meat, fish, seafood, dumplings. • -20°C ~ -8°C: chilling food for long-term storage, such as raw meat, fish, seafood, dumplings.
Freezer compartment	<ul style="list-style-type: none"> • Food for long-term storage. • Seafood, fish, meat, dumplings, frozen baked goods.

TEMPERATURE SETTING RECOMMENDATION

Temperature Setting Recommendation	
Environment Temperature	Temperature Setting
Summer (Above 38°C)	Fridge set on 2°C
	Freezer set on -20°C
Normal	Fridge set on 4°C
	Freezer set on -18°C



- Information above give users recommendation of temperature setting.
- Temperature of convertible zone setting depends on type of food stored.

IMPACT ON FOOD STORAGE

- Under Recommended setting, the best storage time of fridge is no more than 3 days.
- Under Recommended setting, the best storage time of freezer is no more than 1 month.
- The best storage time may reduce under other setting.

FREEZING FRESH FOOD

- The freezer compartment is suitable for freezing fresh food and storing frozen and deep-frozen food for a long time.
- Place the fresh food to be frozen in the freezer compartment.
- The maximum amount of food that can be frozen in 24 hours is specified on the rating plate.
- The freezing process lasts 24 hours: during this period do not add other food to be frozen.

STORING FROZEN FOOD

When first starting-up or after a period out of use, before putting the item in the compartment let the appliance run at least 2 hours on a lower temperature settings.

Important! In the event of accidental defrosting, for example the power has been off for longer than the value shown in the technical characteristics chart under "rising time", the defrosted food must be consumed quickly or cooked immediately and then re-frozen (after cooked).

THAWING

Deep-frozen or frozen food, prior to be used, can be thawed in the fridge compartment or at room temperature, depending on the time available for this operation.

Small pieces may even be cooked still frozen, directly from the freezer. In this case, cooking will take longer.

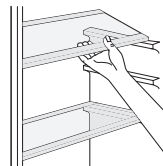
ICE-CUBE

This appliance may be equipped with one or more ice-cube to produce ice.

ACCESSORIES

Movable shelves

The walls of the refrigerator are equipped with a series of runners so that the shelves can be positioned as desired.



Positioning the door balconies

To permit storage of food packages of various sizes the door balconies can be placed at different heights. To make these adjustments proceed as follows: gradually pull the balcony in the direction of the arrows until it comes free then reposition as required.



HELPFUL HINTS AND TIPS

To help you make the most of the freezing process here are some important hints;

- The maximum quantity of food which can be frozen in 24hrs. Is shown on the rating plate;
- The freezing process takes 24 hours. No further food to be frozen should be added during this period;
- Only freeze top quality fresh and thoroughly cleaned foodstuffs;
- Prepare food in small portions to enable it to be rapidly and completely frozen and to make it possible subsequently to thaw only the quantity required;
- Wrap up the food in aluminum foil or polythene and make sure that the packages are airtight;
- Do not allow fresh unfrozen food to touch food which is already frozen thus avoiding a rise in temperature of the latter;
- Lean foods store better and longer than fatty ones; salt reduces the storage life of food;
- Water ices if consumed immediately after removal from the freezer compartment can possibly cause the skin to be freeze burnt;
- It is advisable to show the freezing in date on each individual pack to enable you removal from the freezer compartment can possibly cause the skin to be freeze burnt;
- It is advisable to show the freezing in date on each individual pack to enable you to keep tab of the storage time.

HINTS FOR STORAGE OF FROZEN FOOD

To obtain the best performance from this appliance you should)

- Make sure that the commercially frozen foodstuffs were adequately stored by the retailer;
- Be sure that frozen foodstuffs are transferred from the food store to the freezer in the shortest possible time;
- Not open the door frequently or leave it open longer than absolutely necessary.
- Once defrosted food deteriorates rapidly and cannot be re-frozen;
- Do not exceed the storage period indicated by the food manufacture.

HINTS FOR FRESH FOOD REFRIGERATION

To obtain the best performance:

- Do not store warm food or evaporating liquids in the refrigerator.
- Do cover or wrap the food particularly if it has a strong flavor.
- Make (all types): wrap in polythene bags and place on the glass shelves above the vegetable drawer.
- For safety store in this way only one or two days at the most.
- Cooked foods cold dishes etc.: These should be covered and may be placed on any shelf.
- Fruit and vegetables: these should be thoroughly cleaned and placed in the special drawer(s) provided.
- Butter and cheese: these should be placed in special airtight containers or wrapped in aluminum foil or polythene bags to exclude as much air as possible.
- Milk bottle: these should have a cap and should be stored in the balconies on the door.
- Bananas, potatoes, onions and garlic, if not packed must not be kept in the fridge.

CLEANING

For hygienic reasons the appliance interior, including interior accessories, should be cleaned regularly.



Caution! The appliance may not be connected to the mains during cleaning. Danger of electrical shock! Before cleaning switch the appliance off and remove the plug from the mains, or switch off or turn out the circuit breaker or fuse. Never clean the appliance with a steam cleaner.

Moisture could accumulate in electrical components, danger of electrical shock! Hot vapors can lead to the damage of plastic parts. The appliance must be dry before it is placed back into service.

Important! Ethereal oils and organic solvents can attack plastic parts, e.g. lemon juice or the juice from orange peel, butyric acid, cleanser that contain acetic acid.

- Do not allow such substances to come into contact the appliance parts.
- Do not use any abrasive cleaners.
- Remove the food from the freezer. Store them in a cool place, well covered.
- Switch the appliance off and remove the plug from the mains, or switch off or turn out the circuit breaker of fuse.
- Clean the appliance and the interior accessories with a cloth and lukewarm water. After cleaning wipe with fresh water and rub dry.
- After everything is dry place appliance back into service.

DEFROST DESCRIPTION (NO FROST)

It is a total no frost refrigerator-freezer which will be defrosted automatically.

TROUBLESHOOTING

! Caution! Before troubleshooting, disconnect the power supply. Only a qualified electrician of competent person must do the troubleshooting that is not in this manual.

Important! There are some sounds during normal use (compressor, refrigerant circulation).

Problem	Possible Cause	Solution
Appliance dose not work	Main plug is not plugged in or is loose.	Insert main plug.
	Fuse has blown or is defective.	Check fuse, replace if necessary.
	Socket is defective.	Mains malfunctions are to be corrected by an electrician.
Appliance freezes or cools too much	Temperature is set too cold or the appliance runs at SUPER modes.	Turn the temperature regulator to a warmer setting temporarily.
The food is not frozen enough.	Temperature is not properly adjusted.	Please look in the initial Temperature Setting section.
	Door was open for an extended period.	Open the door only as long as necessary.
	A large quantity of warm food was placed in the appliance within the last 24 hours.	Turn the temperature regulation to a colder setting temporarily.
	The appliance is near a heat source.	Please look in the installation location section.
Heavy build up of frost on the door seal.	Door seal is not air tight.	Contact the Technician to investigate.
Unusual noises	Appliance is not level.	Re-adjust the feet.
	The appliance is touching the wall or other objects.	Move the appliance slightly.
	A component, e.g. a pipe, on the rear of the appliance is touching another part of the appliance or the wall.	Contact the Technician to investigate.
Water on the floor	Water drain hole is blocked.	Contact the Technician to investigate.

If the malfunction shows again, contact the Service Center.

These data are necessary to help you quickly and correctly. Write the necessary data here, refer to the rating plate.

Model	CR551-MDR01
Rated Power	180 W
Rated Defrost Power	164 W
Rated Voltage	220-240 V
Rated Frequency	50 Hz
Gross Volume Total	551 L
Net Volume Total	505 L
Net Volume Fridge	329 L
Net Volume Freezer	76 L
Net Volume Multi-Temp	20 L
Net Volume Convertible	80 L
Refrigerant	R600a
Foaming Agent	C-Pentane
Climate Class	T
Product Dimension (W x D x H)	905 x 597 x 1902 mm
Accessories	Twist Ice Cube, Egg Tray

